



PCC Career Pathways

Mark Mitsui, President

Kate Kinder, Dean

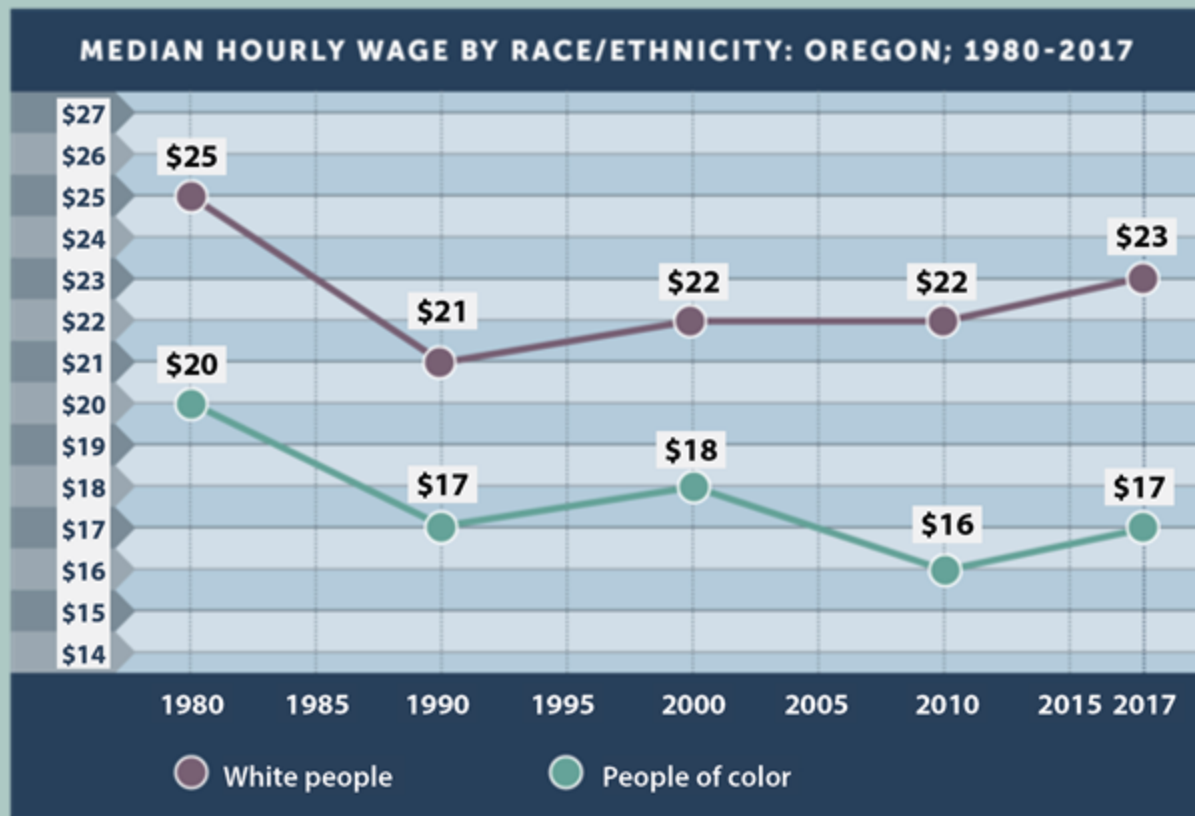


May 2021



**Portland
Community
College**

Economic Inequality



NATIONALLY

The wealth gap between Black and white Americans is as wide as it was in the 1960's, and would take 11.5 Black households to equate the net worth of the typical white household.

Date source: IPUMS USA | National Equity Atlas

Access to College Credentials

Prior to the COVID-19 epidemic and recession, **448,000 adults** 25 and older in Oregon were **unemployed or working and making less than \$15/hr.** without postsecondary credentials = more than 9 years of high school grads.

In PCC's District = **126,355 adults** 25 and older were **unemployed or working and making less than \$15/hr.** without postsecondary credentials.

Access to College Credentials (cont.)

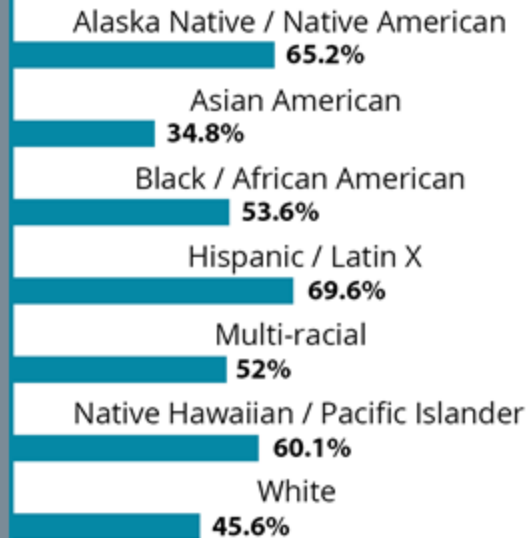
80% of good jobs will require a post-secondary credential.

Georgetown Center on Education and the Workforce

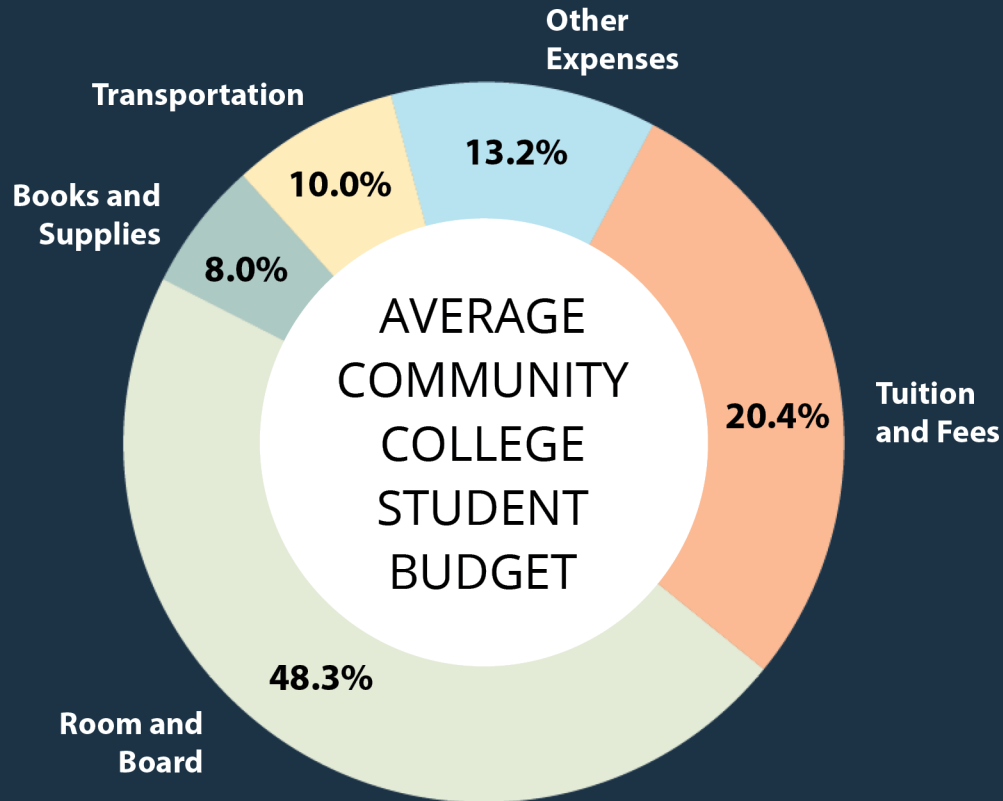
Nationally, **99% of jobs created** during the last economic recovery went to workers with at least **some college** education.

Georgetown Center on Education and the Workforce

Percentage of all adults 25 and older who need opportunity to complete postsecondary credentials
(HECC, 2018)



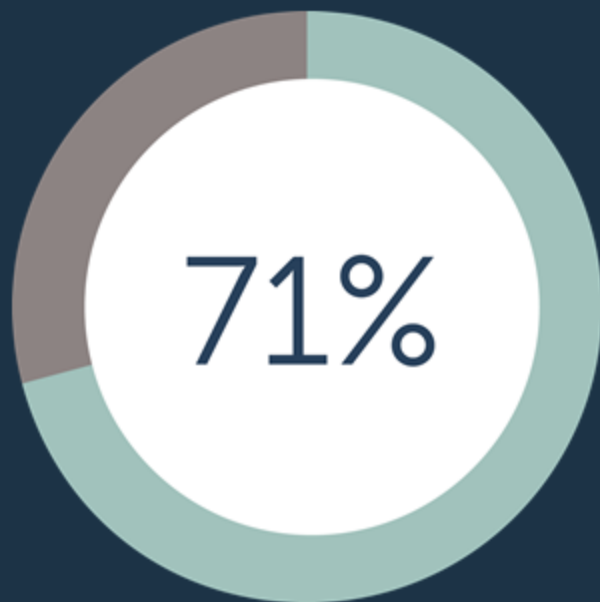
Unmet Need



Average total budget for a community college student in 2019:

\$18,000

Unmet Need



public year students with unmet
financial need ¹

Unmet need is a significant barrier to student enrollment and completion, and the lack of public policies to address it poses a significant challenge to improving access and advancing equity within postsecondary education.¹

¹ Walizer, Lauren. CLASP, *When financial Aid Falls Short*, December 2018

Basic Needs Insecurity

#REALCOLLEGE Survey	Portland Community College (2019)	Oregon's Community Colleges (2019)
Food Insecurity	40%	41%
Housing Insecurity	53%	52%
Homelessness	19%	20%

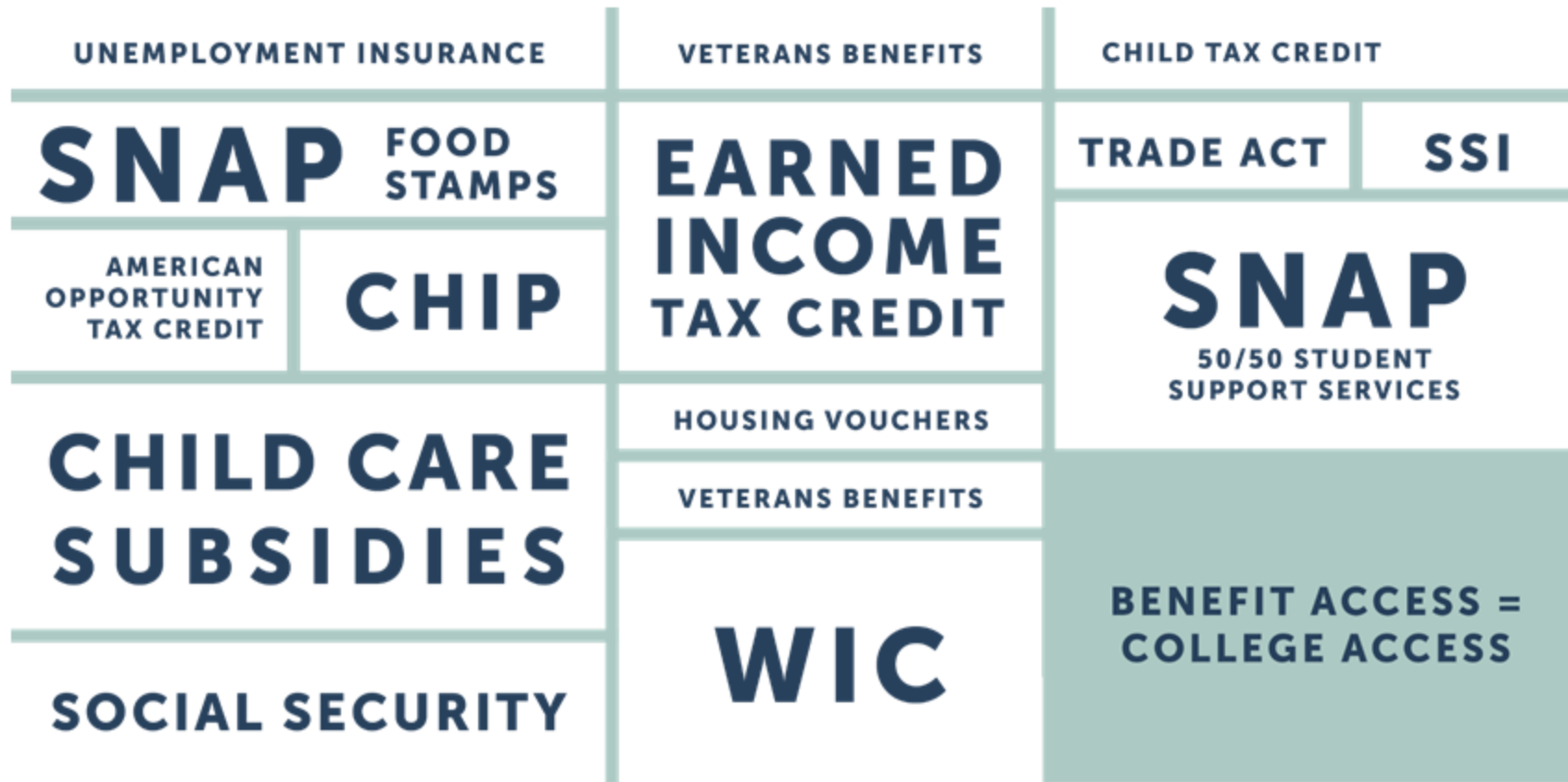
The Hope Center: #RealCollege 2020: Five Years of Evidence on Campus Basic Needs Insecurity and Oregon Community Colleges #RealCollege Survey



63% of community college students reported some basic needs insecurity in the last year.

(Temple University's HOPE Center)

Access to Benefits



Oregon Career Pathways

Connecting Systems, Building Skills, Advancing Economic Opportunities

A Career Pathway is a series of connected, high quality education and training programs with integrated student support services that enables individuals to secure a job and advance in an industry or occupation.

Supports individual's progression along the education and career continuum = college completion and career advancement

Eases student transitions: K-12 – GED/ESL/pre-college—community college—university—workforce

Offers short-term stackable credentials leading to in-demand occupations and degrees

Integrates student support services = wrap-around college success and career coaching

Sector Strategies and Industry Demand

HEALTH CARE

**COMPUTER
INFORMATION
TECHNOLOGY**

MANUFACTURING

**BUSINESS AND
MANAGEMENT**

CONSTRUCTION

**ADVANCED
TECHNOLOGY**

STEM

**AGRICULTURE, FOOD,
AND NATURAL
RESOURCES**

**SOCIAL SERVICES
AND EDUCATION**

**ARTS,
INFORMATION, AND
COMMUNICATION**

**INDUSTRIAL
ENGINEERING**



What Does a Career Pathway Look Like for a Student?

MULTIPLE ENTRY POINTS

Students can start their training at different points in time, with their industry recognized credentials (IRC), certificates and degrees stacking towards the next level credential.

4-year degree; IRC

2-year degree; IRC

Medical Assisting Certificate; AAMA IRC

Healthcare Bridge; IET Model, IRC

Increasing Skills,
Competencies & Credentials
Informed by Industry/Employers

Well-connected and transparent
education, training, credentials,
and support services

3rd Job in Career Path

Clinic Care
Coordinator

2nd Job in Career Path

Medical Assistant

1st Job in Career Path

Internship; Caregiver,
Dietary Aide; Office
Clerk

MULTIPLE EXIT POINTS

Students have multiple points where they can end their training/education to enter the workforce and advance their career over time.

Holistic And Integrated Approach



STUDENT-CENTERED SUCCESS COACHING



INDUSTRY AND EMPLOYER PARTNERSHIPS



LEARNING COMMUNITIES (COHORTS)



INTEGRATED SUPPORTIVE SERVICES



ACADEMIC SUPPORT AND ACCELERATED OPTIONS



STACKABLE COLLEGE CREDENTIALS

SNAP 50/50

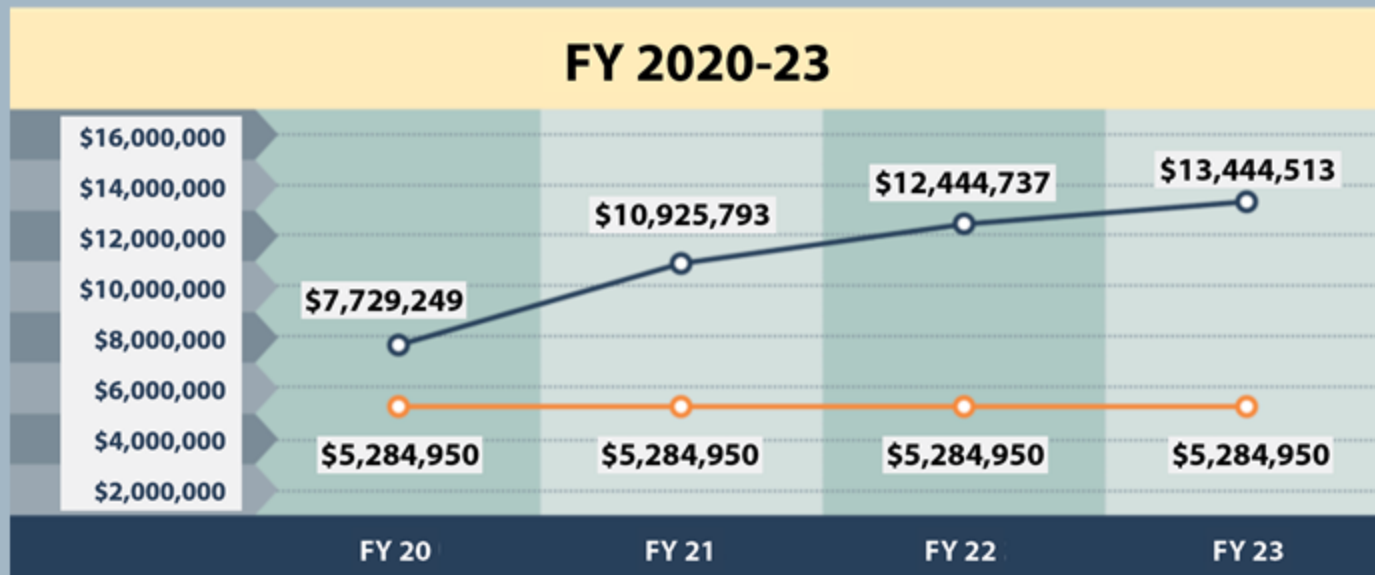
SNAP (formerly known as Food Stamps) = Supplemental Nutrition Assistance Program

STEP = SNAP Training Employment Program, Oregon's SNAP 50/50

SNAP 50/50 is a federal reimbursement grant where providers are reimbursed for 50% of their expenses to support SNAP recipients achieve their education and career goals and increase their economic mobility.

The **50% reimbursement** can be used for staffing (success coach) and supportive services to help students with unmet financial need (gap funding for tuition, fees, books, tools, bus pass, parking pass, etc.).

Budget Reflects Values



Every \$1 investment in PTO = \$1.63

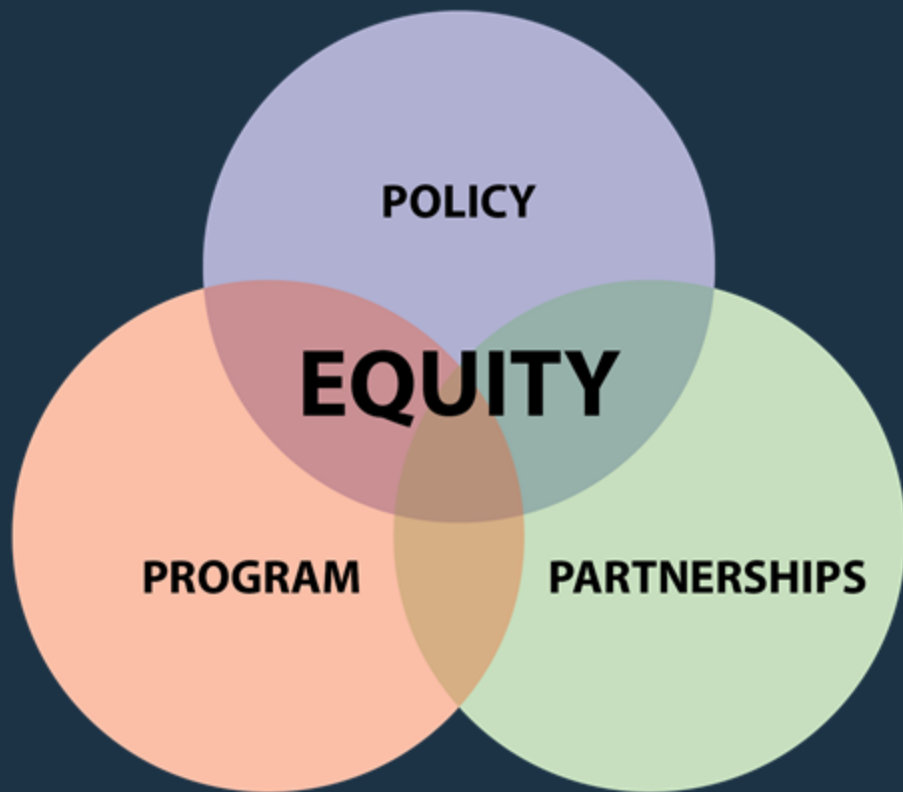
This same approach to investing resources could bring in \$36 million in federal funding to all 17 of Oregon's community colleges between FY 19 and FY25.

Holistic Model = Economic Mobility

Young certificate holders benefit from large earnings gains as they enter the workforce and set a course at the start of their careers.

Older workers also may enter a certificate program to upgrade their skills while they remain employed. These older workers—especially those ages 45 and over—experience a rebound, if not a full recovery, in their earnings.

Transforming Systems



Transforming policies, programs, and partnerships to close opportunity gaps and increase economic mobility is essential for racial equity, economic mobility, and an inclusive recovery.



Learn more about Career Pathways at Portland Community College.

Contact: cp@pcc.edu

